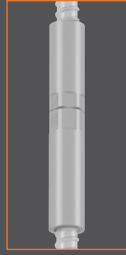


GENUINE 



NEW

ReidBar™ TX Coupler

**Fully Compliant,
Built for Strength.**

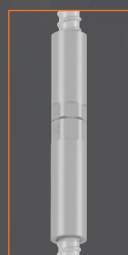
- ✓ Advanced 2-part reinforcement connection system.
- ✓ Exceptional durability, strength, and ductility.
- ✓ Engineered for high-performance splicing in civil applications.
- ✓ Tested to highest level of ISO 15835-1:2018
- Classified as an FS (Fatigue & Seismic)
Mechanical Splice Coupler System.



Contact us today.
| www.reid.com.au
| 1300 780 250



GENUINE 



NEW

ReidBar™ TX Coupler

**Fully Compliant,
Built for Strength.**

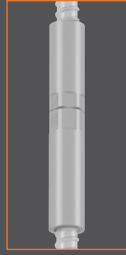
- ✓ Advanced 2-part reinforcement connection system.
- ✓ Exceptional durability, strength, and ductility.
- ✓ Engineered for high-performance splicing in civil applications.
- ✓ Tested to highest level of ISO 15835.1
- Category FS coupler as a mechanical splice.



Contact us today.
www.reid.com.au
1300 780 250



GENUINE 



NEW

ReidBar™ TX Coupler

**Engineered Performance
You Can Specify With Confidence.**

The ReidBar™ TX Coupler system has been rigorously tested and certified to Australian Standards including AS 3600, AS 5100.5 and ISO 15835. Designed to meet fatigue and seismic requirements, this FS-classified mechanical splice ensures full-strength, code-compliant performance — verified by independent test reports and in-house R&D.

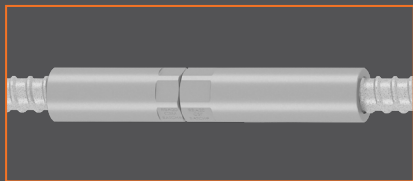
**Design-friendly,
code-compliant, fully traceable.**

- ✓ ISO 15835-1:2018 compliant (type FS Mech. Splice)
- ✓ Ideal for congested or critical reinforcing zones
- ✓ Delivers full bar strength with proven fatigue resistance
- ✓ Backed by test data for all sizes within the range



Contact us today.
| www.reid.com.au
| 1300 780 250





NEW

ReidBar™ TX Coupler

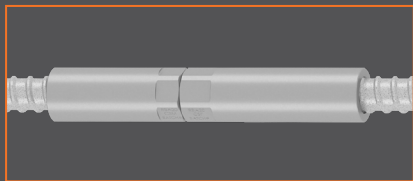
Save time. Stay compliant.

ReidBar™ TX Couplers arrive to site pre-assembled, tagged, and ready to install. The simple two-part system (male to female connection) allows semi-skilled labour to connect bars quickly and securely — no onsite threading, no guesswork. Just visual confirmation of a safe, snug fit.

A Smarter Way to Build.

- ✓ Arrives pre-assembled & site-ready
- ✓ Pre-Tagged for ease of site location & assembly
- ✓ Confident installation – visual confirmation of a secure connection
- ✓ Fully compliant with AS 4100:2020 tightening standards
- ✓ Reduces scheduling and ordering complexity
- ✓ Available in Galvanised finish for corrosive environments.





NEW

ReidBar™ TX Coupler

Designed for precast efficiency. Backed by Australian manufacturing.

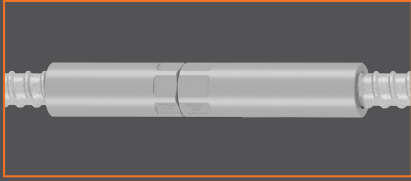


Built for Speed, Accuracy & Repeatability.

- ✓ Simplifies reinforcement & jig setup.
- ✓ Suitable for high congestion steel zones.
- ✓ For flush formwork connection.
- ✓ Ideal for high-volume repeat installations.
- ✓ Reid's In-House support team available every step of the way..

The ReidBar™ TX Coupler streamlines the reinforcement process in precast manufacturing. With pre-threaded assemblies, integrated nail plates, and slim coupler dimensions, it ensures clean fits and faster setups – ideal for panels, columns, beams and wet joints.

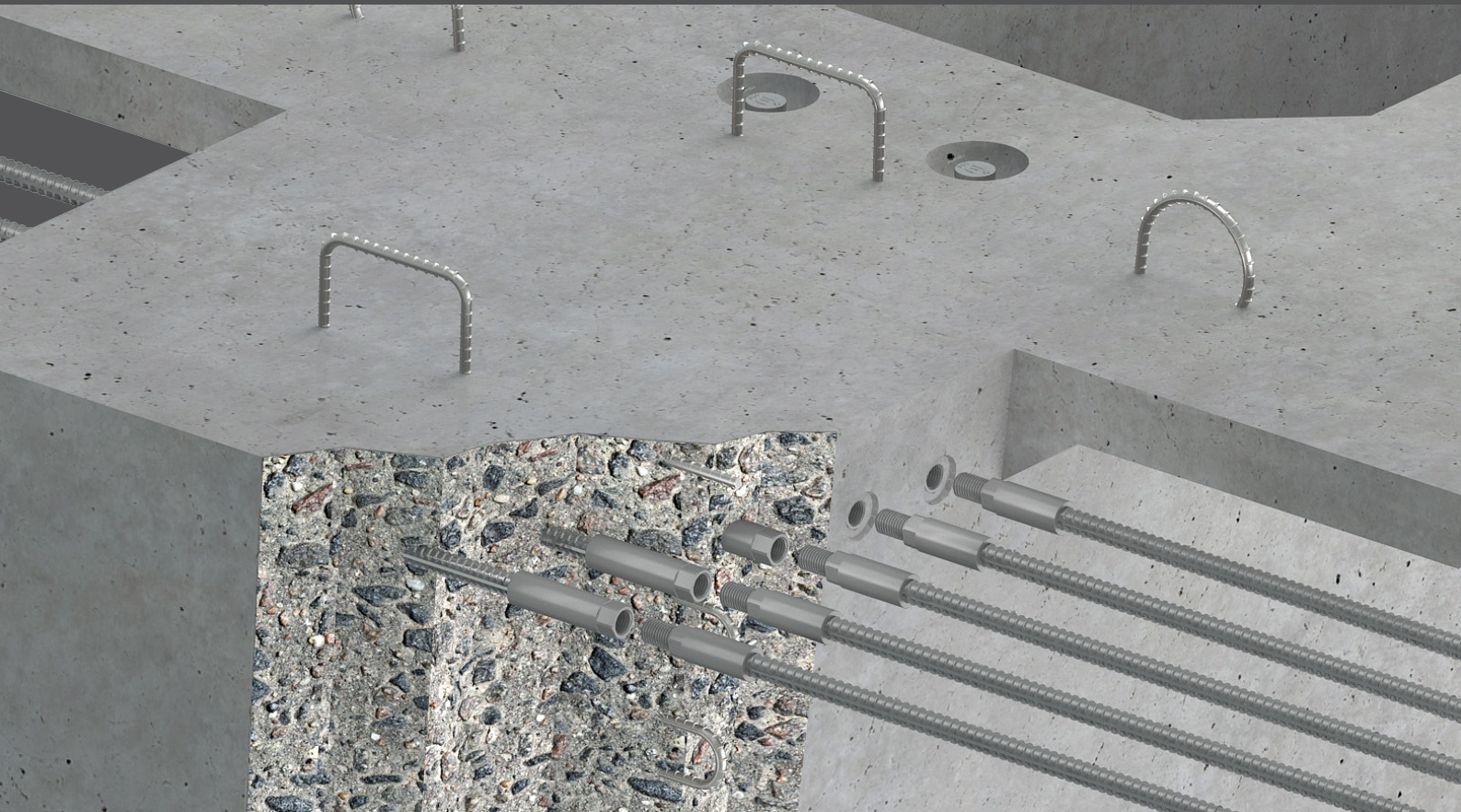




NEW

ReidBar™ TX Coupler

Performance Under Pressure



Reinforcing solutions engineered for infrastructure. Build it once. Build it right.

- ✓ Compliant with AS 5100.5:2017 (Bridge Design – Concrete)
- ✓ High Cycle Fatigue tested to ISO 15835-1&3:2018. Type FS Mech. Splice.
- ✓ Ductile, bar-break system performance verified.
- ✓ No 'cold-working' or deformation of bar required for installation
- ✓ Designed, Tested & assembled in Australia, for Australian conditions.

The ReidBar™ TX Coupler is made for demanding infrastructure environments — from bridges and headstocks to diaphragm walls and marine structures. Rigorously tested to fatigue and seismic standards, it supports continuous reinforcement and full bar strength.

