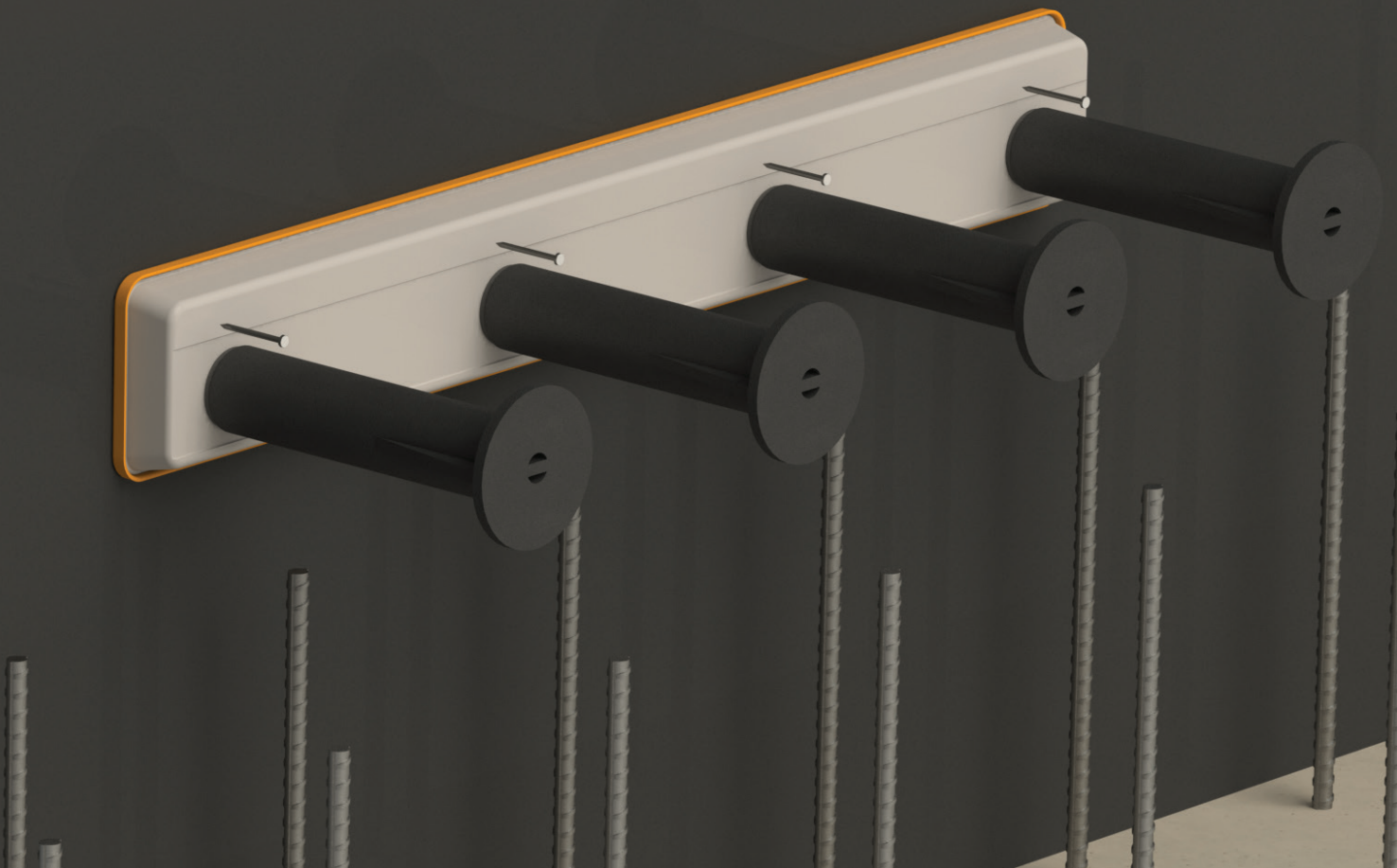




# Genuine ReidBar™

## Floor to Wall Connection Systems

Designed to efficiently and safely place  
ReidBar™ reinforcing connections at the  
Floor to wall intersection in Insitu and  
Precast construction applications.

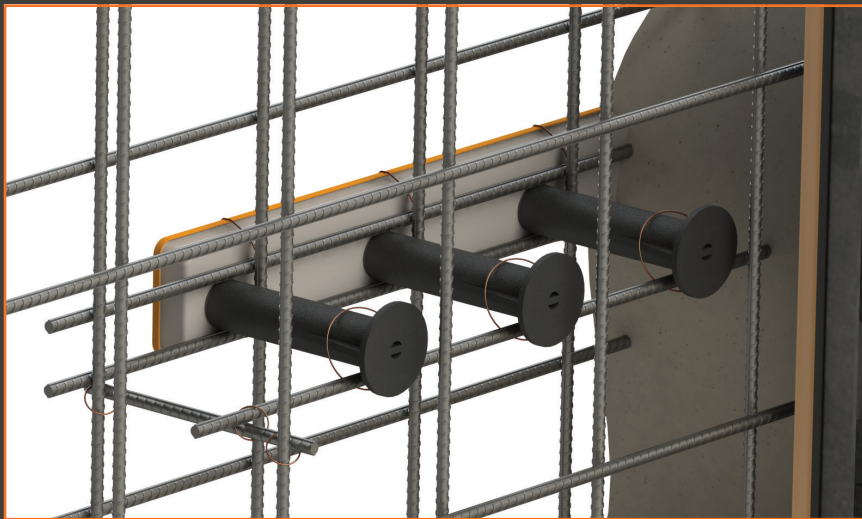


# ReidBar™

## Floor to Wall Connection Systems

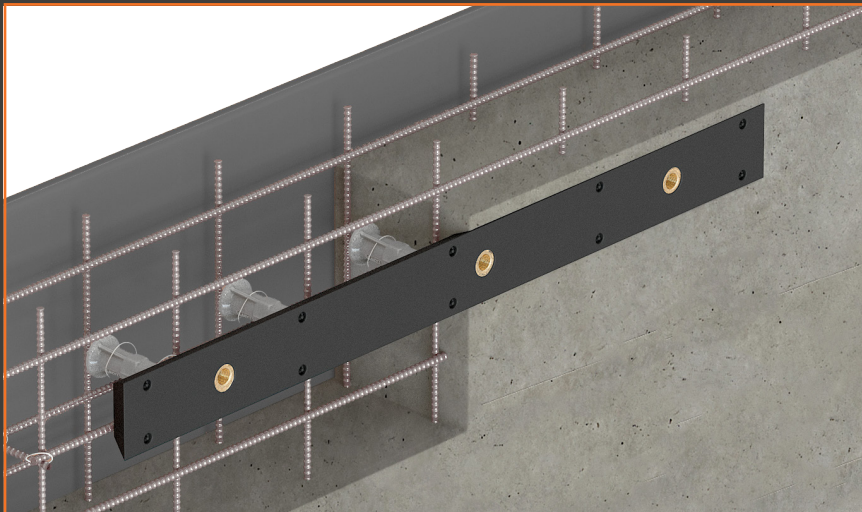
A range of rebated carrier systems for commercial building applications designed to efficiently and safely place ReidBar™ reinforcing connections at the Floor to Wall intersection in Insitu and Precast construction applications.

All ReidBar™ systems and design details are value engineered to optimize performance and constructibility while delivering low cost in place.



### ReidBox™ Connection System

ReidBox™ Connection Systems are value engineered to utilize the ductile properties of the ReidBar™ Reinforcing Bar. Our optimized design and detailing develops a full strength reinforcing connection of concrete framing elements, ensuring the integrity of the building's structural system whilst reducing labor and cost in place.



### ReidBar™ Poly Board Connection System

ReidBar™ Poly Boards are a reusable carrier system designed to place ReidBar™ Connections quickly and accurately reducing labor and cost in place.

# Compliance & Certification



## Genuine ReidBar™ Connection System

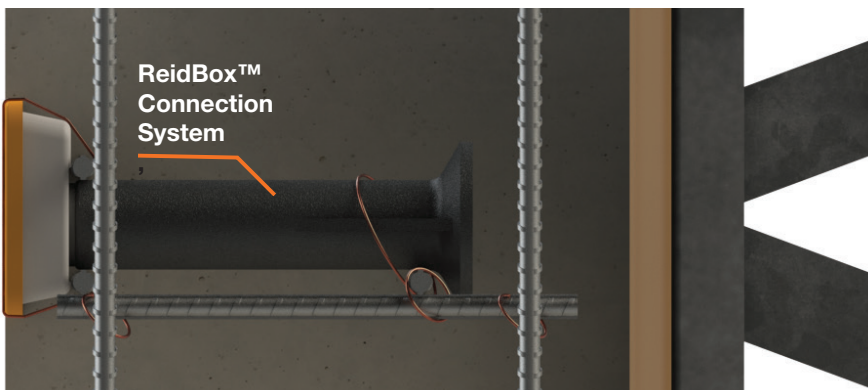
ReidBar™ Connection Systems comply to the relevant standards and codes with certification and traceability in place from raw material to finished product stage.

**Table 1: Compliance**

Standard / Code	Compliant
AS/NZ4671:2001	
AS3600:2018	
NZS3101:2006 A3	

**Table 2: Certification**

Certification	Complete
ACRS Certified Systems (Reidbar™ Systems)	
ISO Certification System and Testing	
Supplier Certification ISO9001:2000	
Batch Traceability of Raw Material	
Third Party Testing Verification	



Quality  
ISO 9001  
SAI GLOBAL

# Project Delivery



The ramsetreid™ team provide project support at every stage of the **Design, Specification, Procurement and Construction Process.**

Our team will work with the project stakeholders on specification requirements to provide solutions that optimize performance and cost in place efficiencies.

## Project Phases

1



### Design

#### Value Engineering

- Specification support
- Compliance
- Risk Mitigation (Design)
- Optimise Cost in Place
- Safety

2

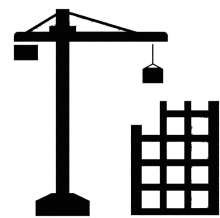


### Procurement

#### Admin Support

- Shop Drawing
- Scheduling
- Cost Control
- Traceability

3



### Construction

#### Delivery

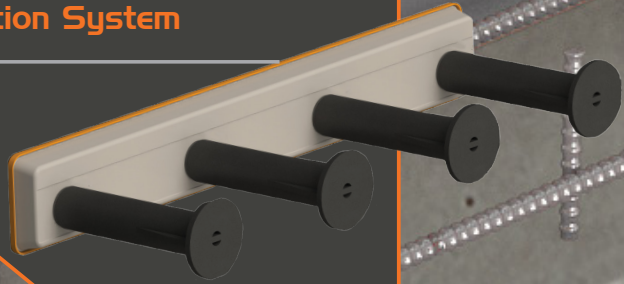
- Pre Manufacture
- Scheduled Delivery
- Site Support

ReidBar™  
Poly Board  
Connection  
System

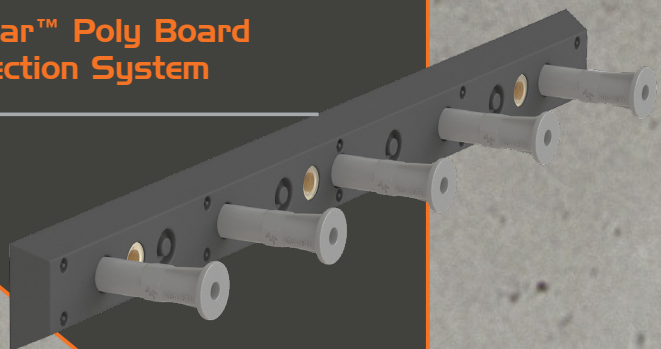
# Systems Overview

A range of rebated carrier systems for commercial building applications designed to efficiently and safely place ReidBar™ reinforcing connections at the Floor to Wall intersection in Insitu and Precast construction applications.

## ReidBox™ Connection System



## ReidBar™ Poly Board Connection System





## Reid customer service

### Reid™ Australia

Customer Service Centre

Tel: 1300 780 250

Email: [sales@reid.com.au](mailto:sales@reid.com.au)

Web: [reid.com.au](http://reid.com.au)

### Reid™ New Zealand

Customer Service Centre

Tel: 0800 88 22 12

Email: [sales@ramsetreid.co.nz](mailto:sales@ramsetreid.co.nz)

Web: [www.reids.co.nz](http://www.reids.co.nz)

#### Reid™

AUS: 1 Ramset Drive, Chirnside Park, Victoria 3116

NZ: 23-29 Poland Road, Glenfield, Auckland 0632

Information in this document is correct at the time of printing. Readers should contact Reid™ or consult Reid™ detailed technical information to ensure product is suitable for intended use prior to purchase. ITW Australia Pty Ltd ABN 63 004 235 063 trading as Reid™ © copyright 2026. ™ Trademarks of Illinois Tool Works Inc user under license by Reid™.

**Important Disclaimer:** Any engineering information or advice ("Information") provided by Reid™ in this document is issued in accordance with a prescribed standard, published performance data or design software. It is the responsibility of the user to obtain its own independent engineering (or other) advice to assess the suitability of the Information for its own requirements. To the extent permitted by law, Reid™ will not be liable to the recipient or any third party for any direct or indirect loss or liability arising out of, or in connection with, the Information. None of the products listed in this document are subject to a warning or ban under the Building Act 2004.

March | 2026

AUS & NZ